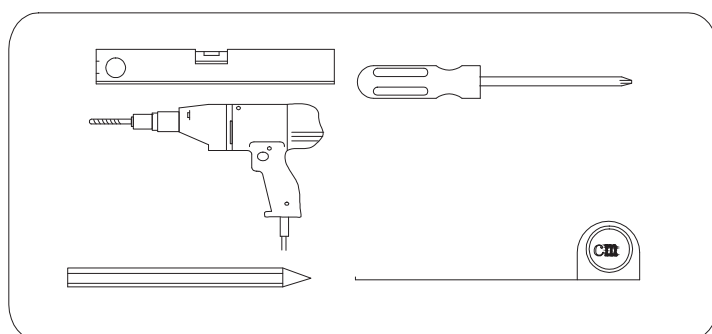
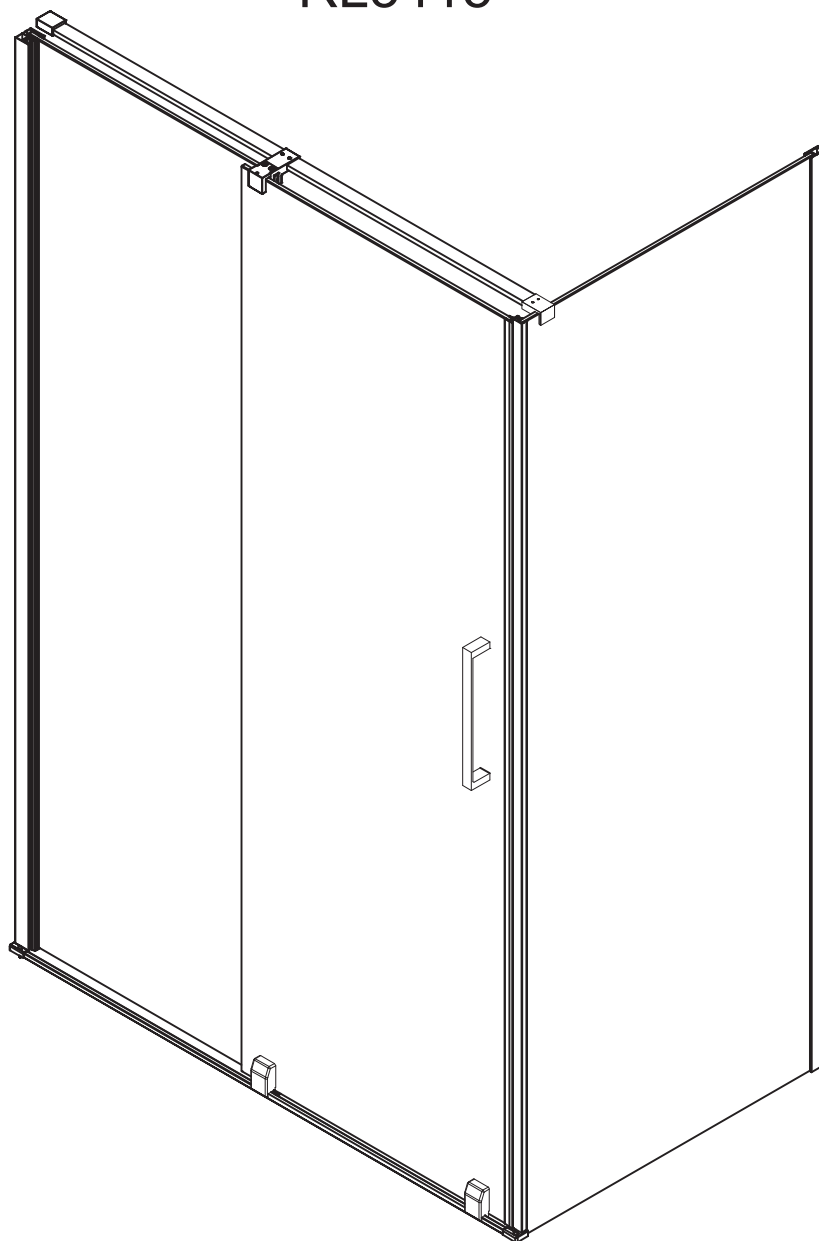


ROLLS LINE

RL3215

RL3315


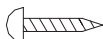
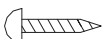
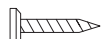
RL3415



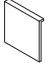






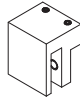
polysan 

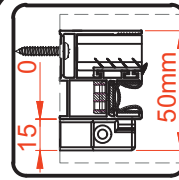
Polysan s.r.o.
Nesměřice 52
285 22 Zruč nad Sázavou
Czech Republic
www.polysan.net

1

 $\phi 8 \times 30 \text{mm}$
3X
 ST5X30mm
3X
 ST4X20mm
1X
 ST4X12mm
3X

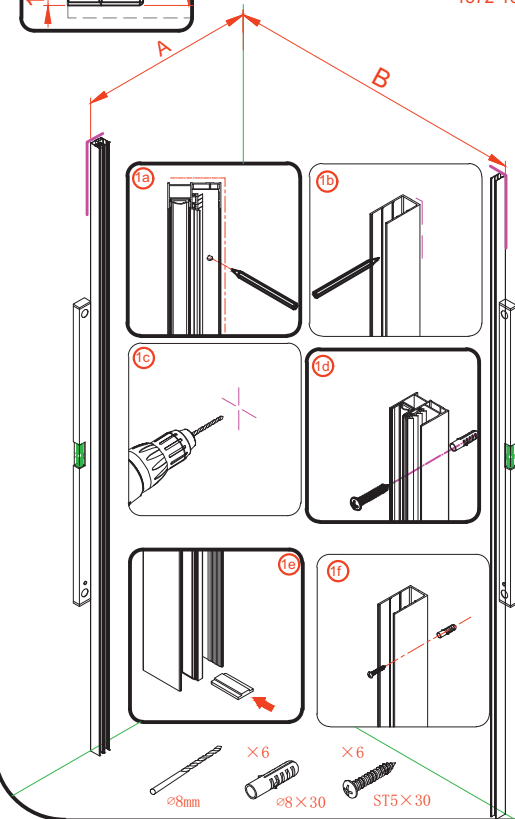
 3X
 3X
 1X
 1X

 2X
 1X
 1X
 1X

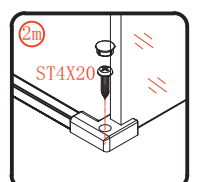
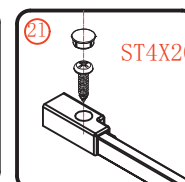
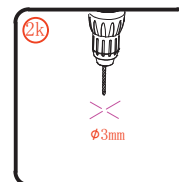
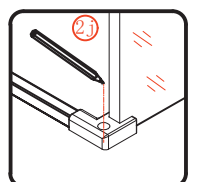
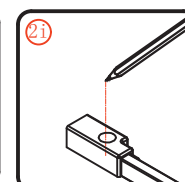
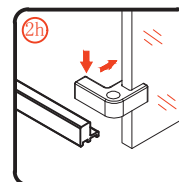
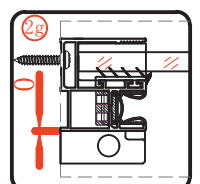
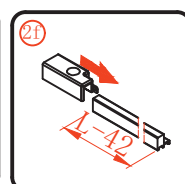
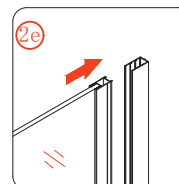
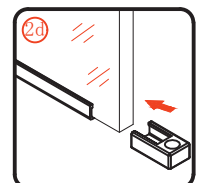
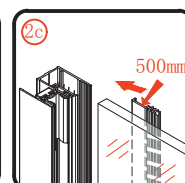
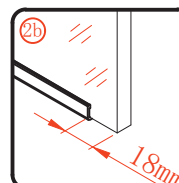
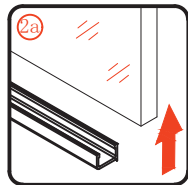
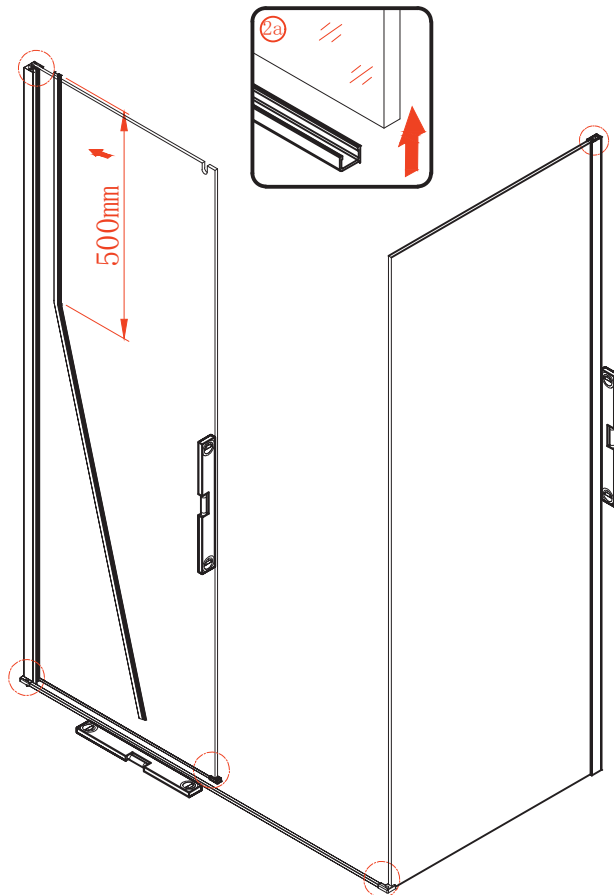


A=765-785(RL3215)
 865-885(RL3315)
 965-985(RL3415)

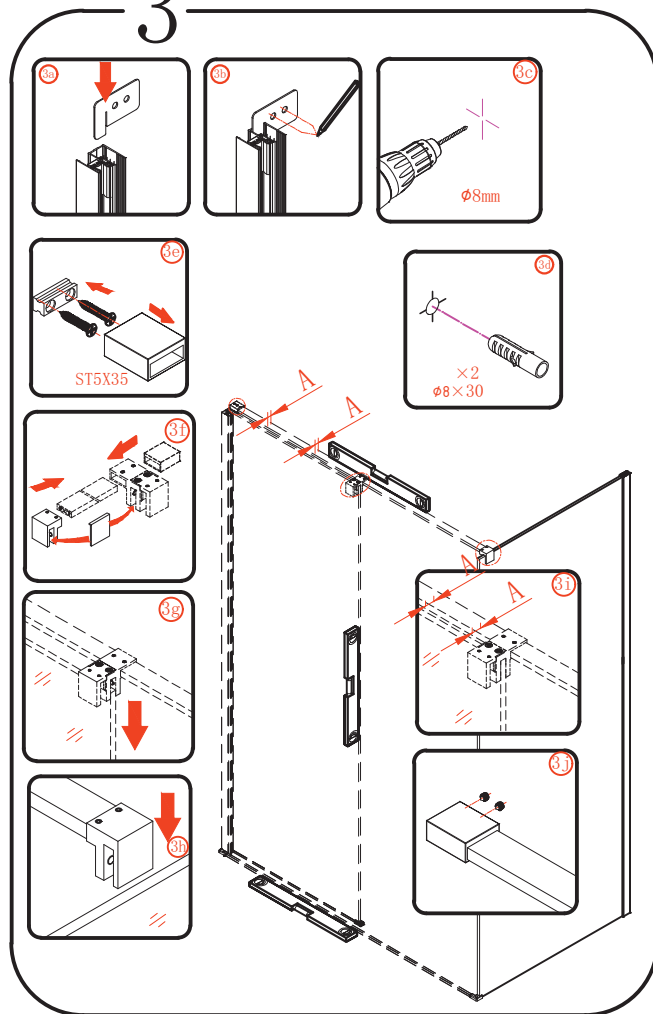
B=1072-1112(RL1115)
 1172-1212(RL1215)
 1272-1312(RL1315)
 1372-1412(RL1415)
 1472-1512(RL1515)
 1572-1612(RL1615)



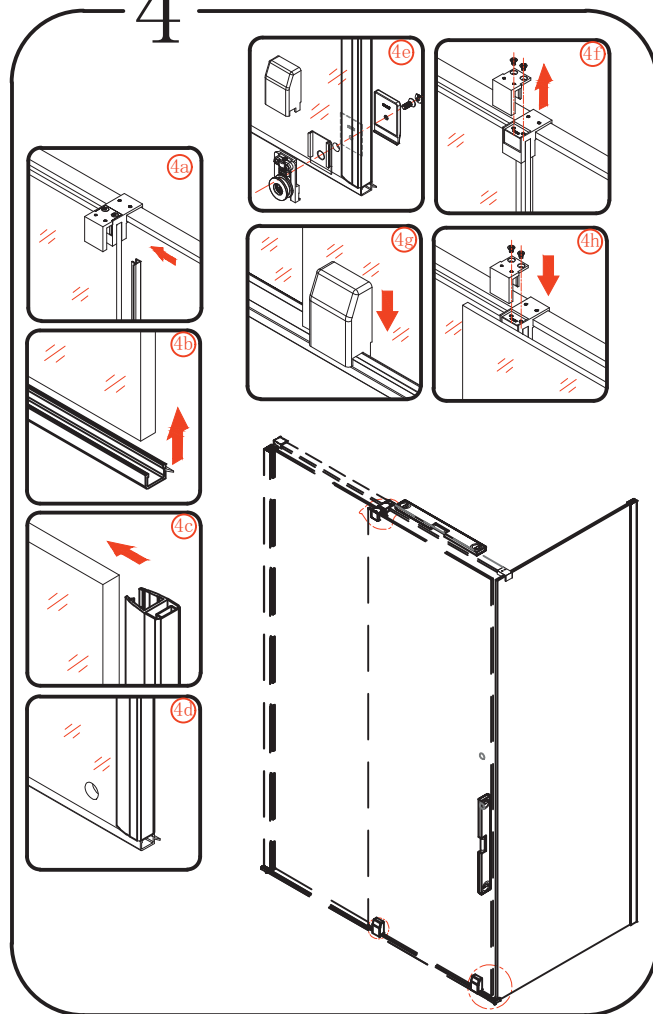
2



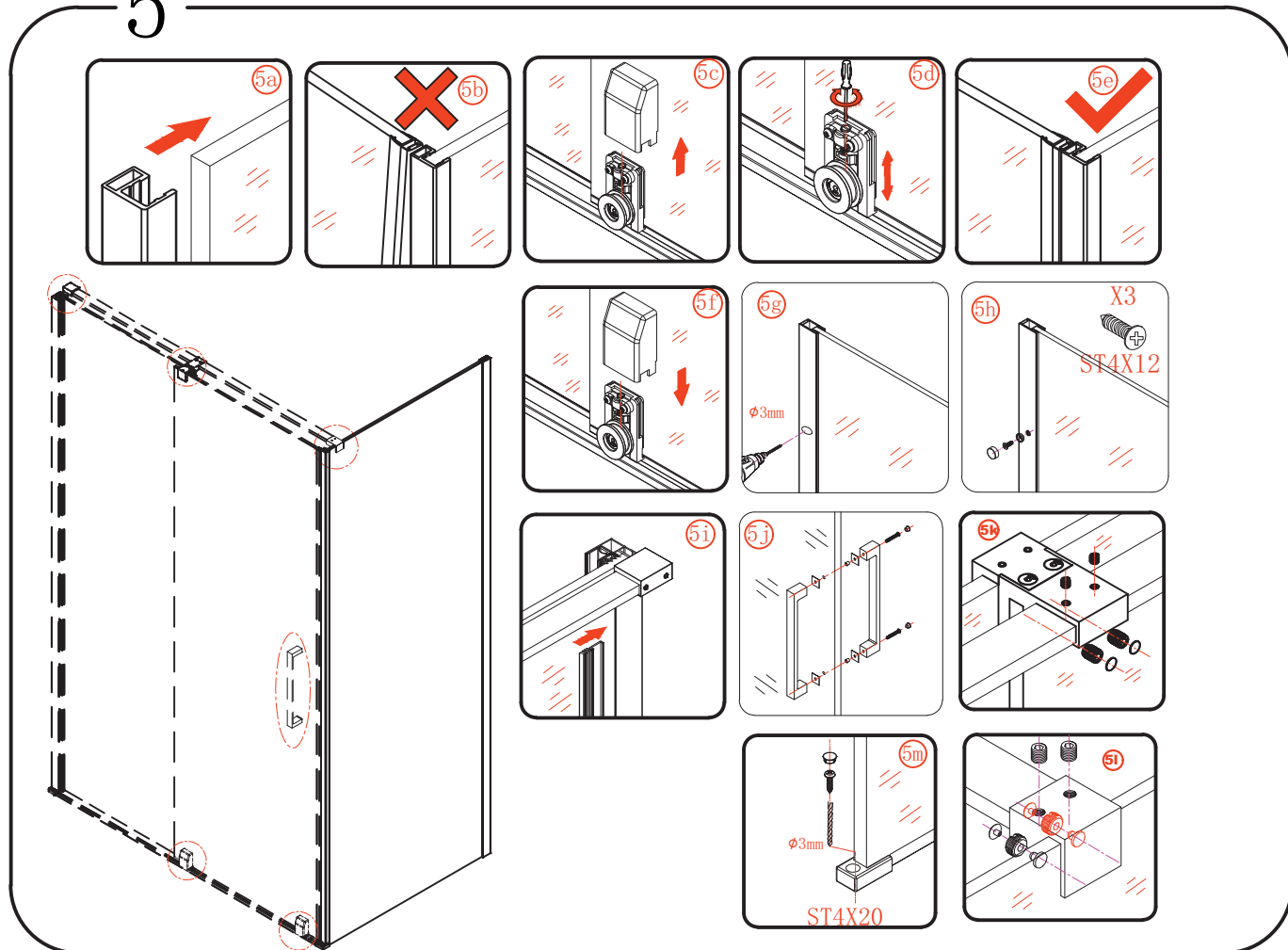
3



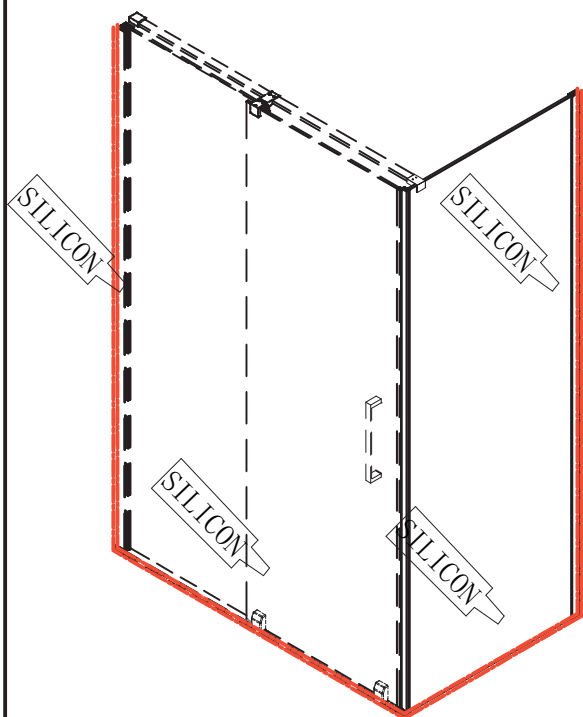
4



5



6



Polysan s.r.o.
Nesměřice 52
285 22 Zruč nad Sázavou
Czech Republic
www.polysan.net

EN 14428

Glass shower enclosure
cleaning efficiency: conforming
impact resistance: conforming
operating life: conforming

Skleněné sprchové zástěny
schopnost čištění: vyhovuje
odolnost proti nárazu: vyhovuje
životnost: vyhovuje