



Solid fuel products
SERIES LTC300

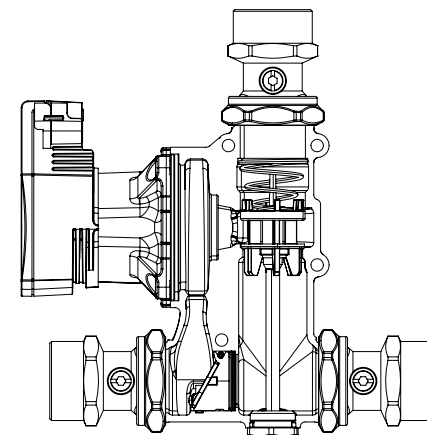
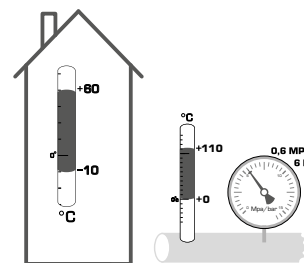


Series LTC341
Series LTC361
Series LTC381



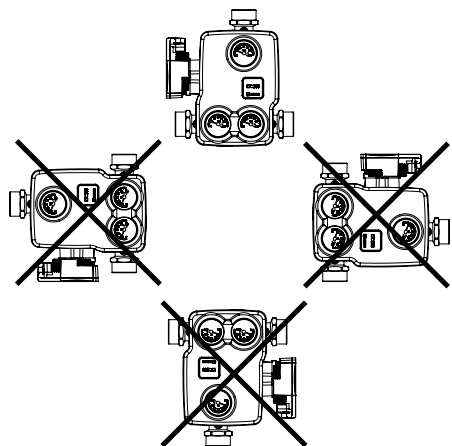
LVD 2014/35/EU
EMC 2014/30/EU
RoHS 2011/65/EC
PED 2014/68/EU, article 4.3

ErP 2009/125/EU
ErP 2015

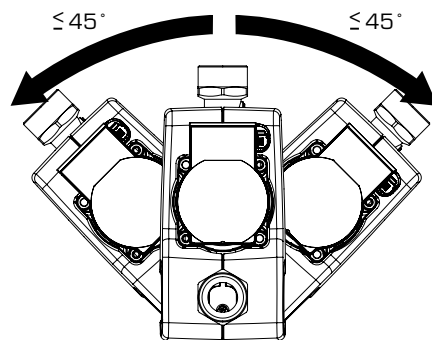


Mtrl.nº: 9814 1077 • Ritn.nº: 4843 vers. A • Rev. 2020-12-01

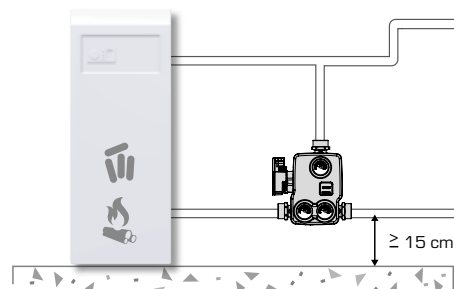
1



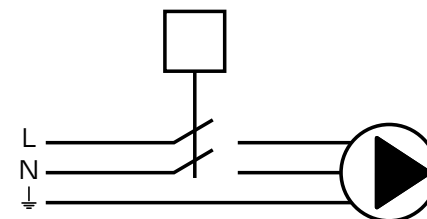
2



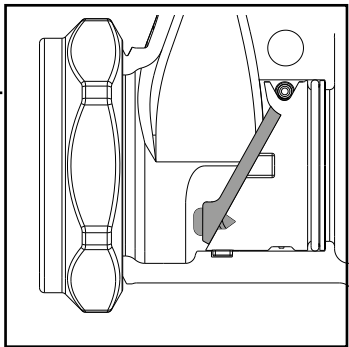
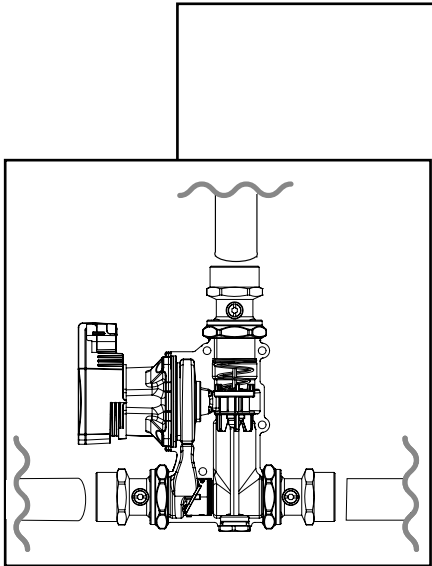
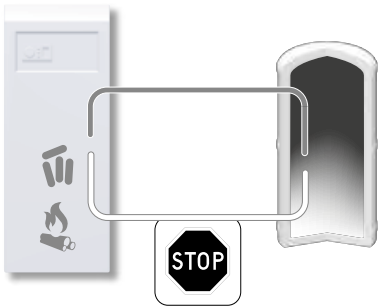
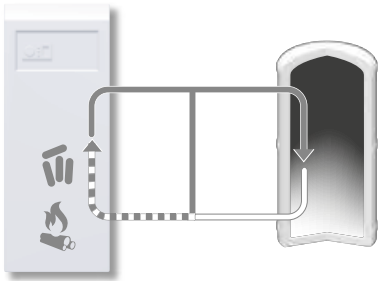
3



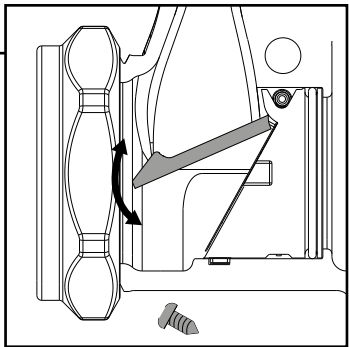
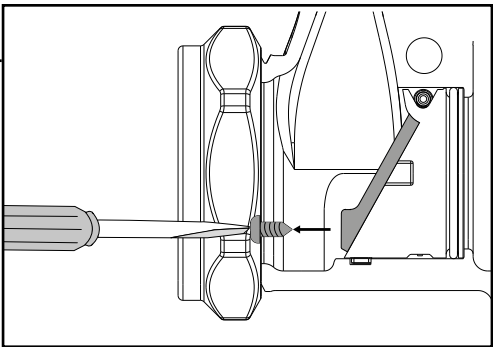
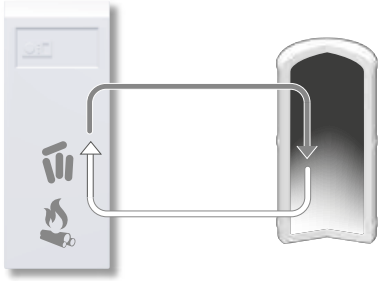
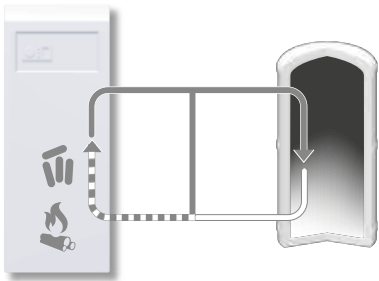
230 VAC, 50Hz



a



b



5

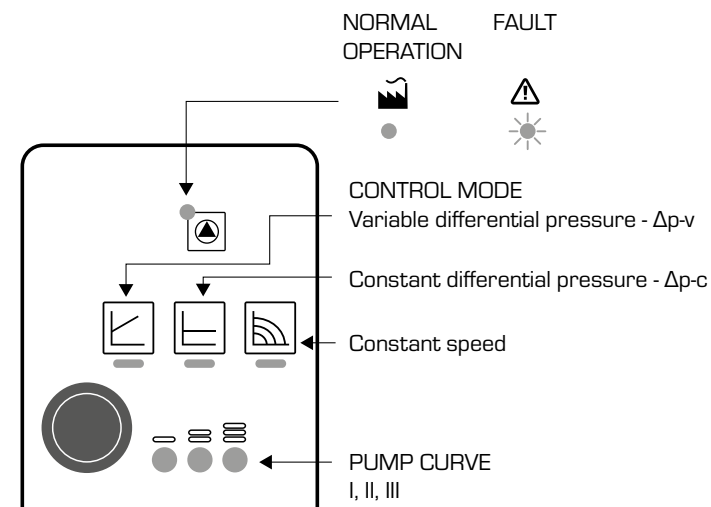
Pump Settings

| Click | LED display | Control mode | Pump curve |
|-------|-------------|---|-------------|
| | | | Recommended |
| 1 | | Constant speed | II |
| 2 | | Constant speed | I |
| 3 | | Variable differential pressure $\Delta p-v$ | III |
| 4 | | Variable differential pressure $\Delta p-v$ | II |
| 5 | | Variable differential pressure $\Delta p-v$ | I |
| 6 | | Constant differential pressure $\Delta p-v$ | III |
| 7 | | Constant differential pressure $\Delta p-v$ | II |
| 8 | | Constant differential pressure $\Delta p-v$ | I |
| 9 | | Constant speed | III |

6

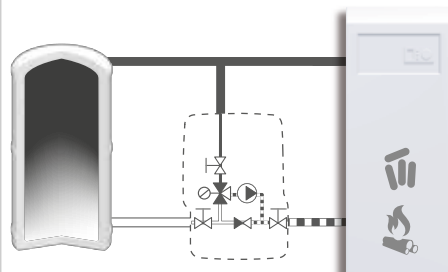
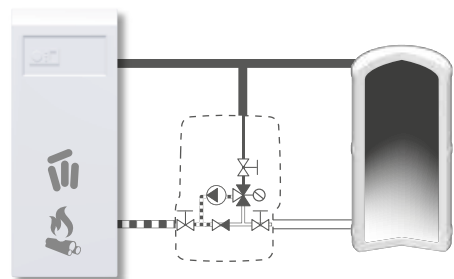
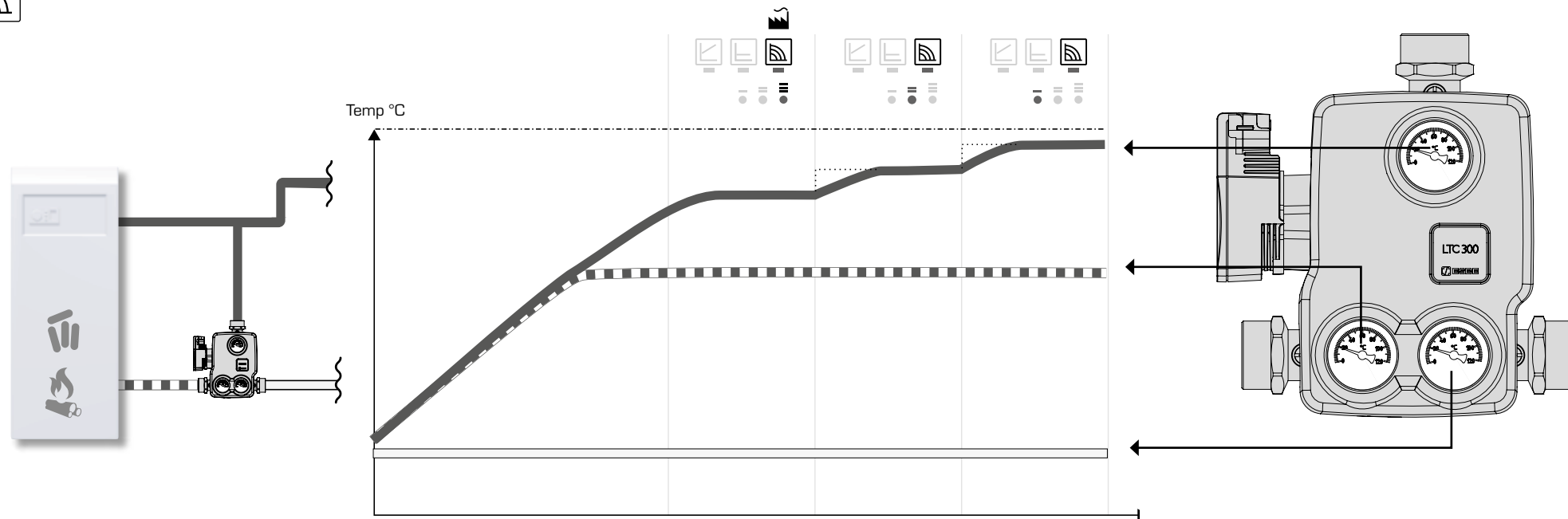


Display



Pump features

| 1 | 2 | 3 | 4 |
|-------|-------------|---------------|-----------------|
| Hold | LED display | Last settings | Status |
| 8 sec | | 1 sec | Locked |
| 8 sec | | 1 sec | Unlocked |
| 4 sec | | 1 sec | Factory setting |
| 3 sec | | 10 min | Venting |



Piping Schematics are General Representations



<https://www.esbe.eu/global/en/products/solid-fuel-products>



www.esbe.eu