



# **SERIES LTC200**

**ESBE®**  
**NO.1 IN HYDRONIC SYSTEM CONTROL**

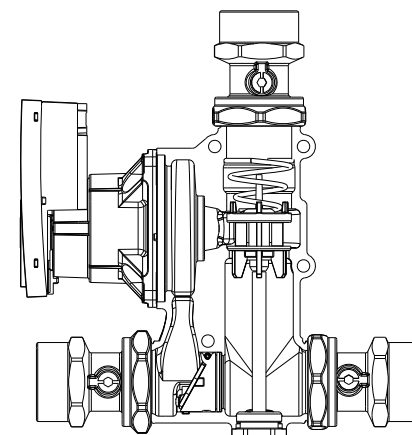
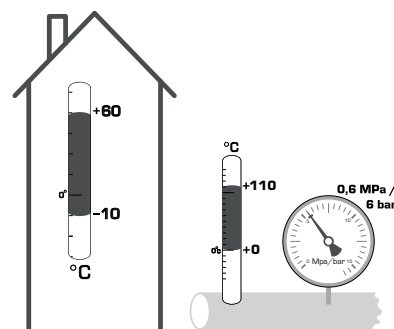
Mtr.Lnr: 9814 04 60 • Ritn.nr: 4744 utg. D • Rev. 1609



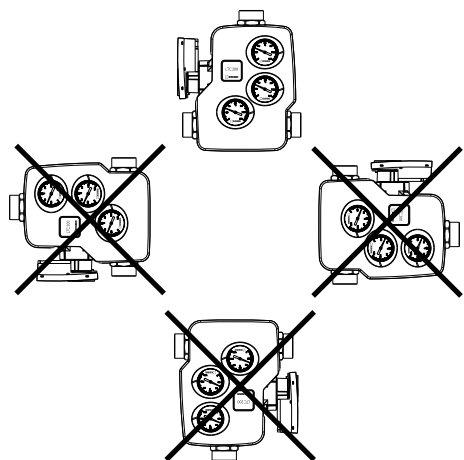
Series LTC261  
Series LTC271



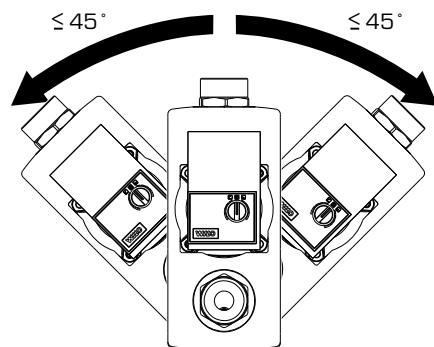
LVD 2014/35/EU  
ErP 2009/125/EU  
EMC 2014/30/EU  
ErP 2015  
RoHS 2011/65/EC  
PED 2014/68/EU, article 4.3



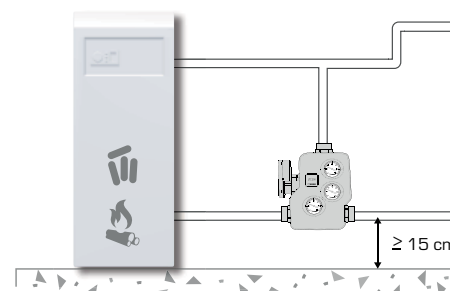
**1**



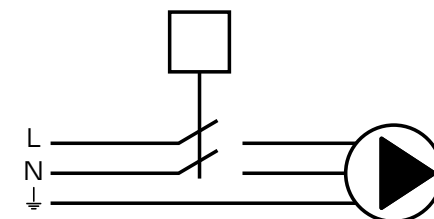
**2**



**3**

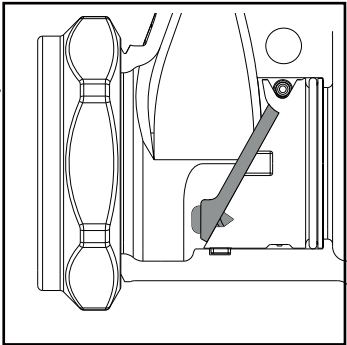
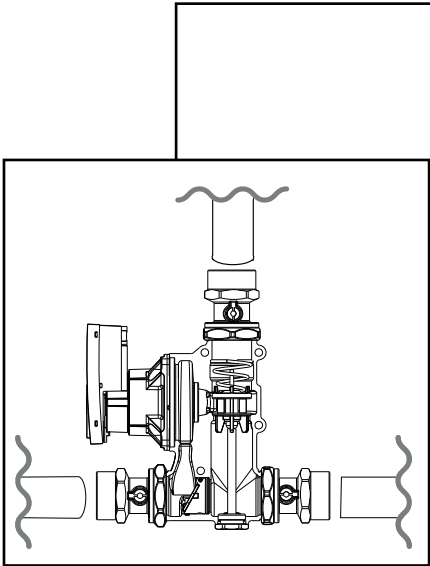
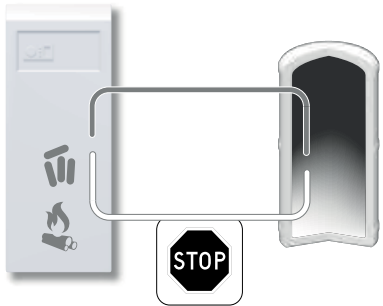
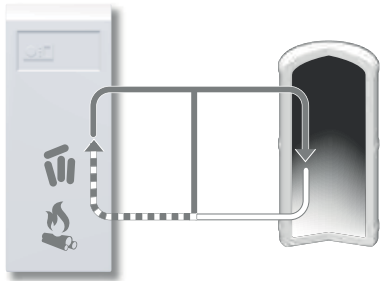


**230 VAC, 50Hz**

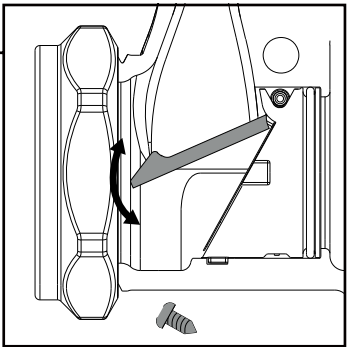
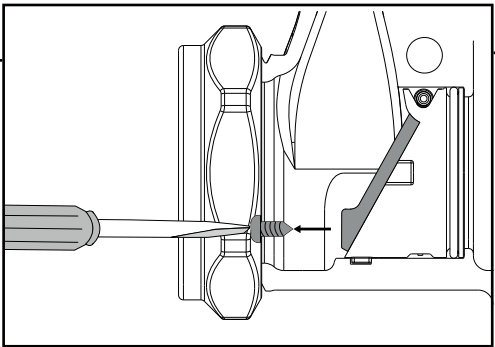
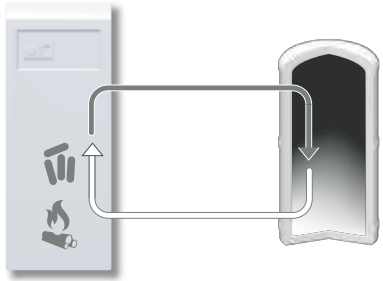
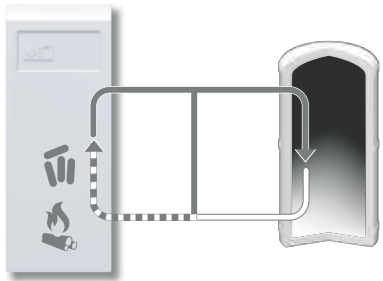


4

a



b

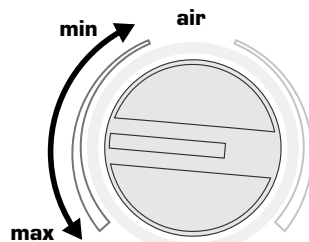
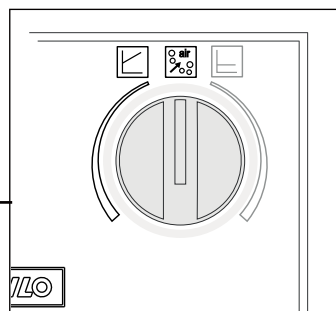


1

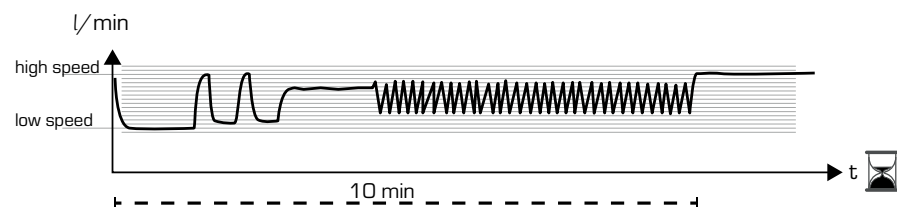
2

click!

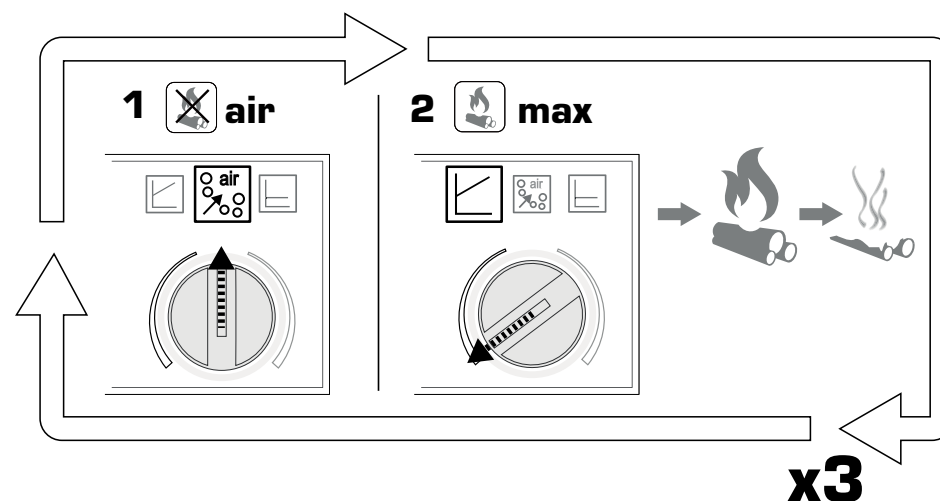
A diagram of a portable electronic device, possibly a handheld meter or a small computer. It has a rectangular body with a screen at the top and a circular button or dial at the bottom. A small rectangular label is visible on the front panel, and a line points to a small circular feature on the right side of the front panel.



### Automatic air venting routine



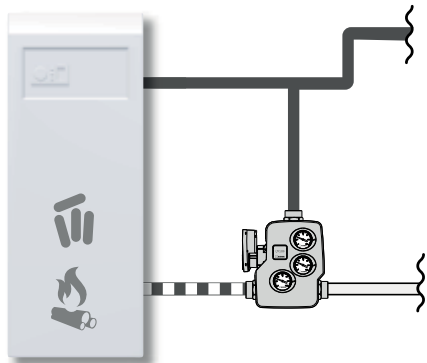
### Air venting at comissioning



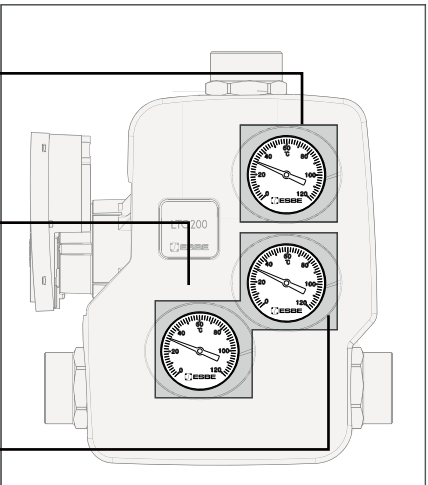
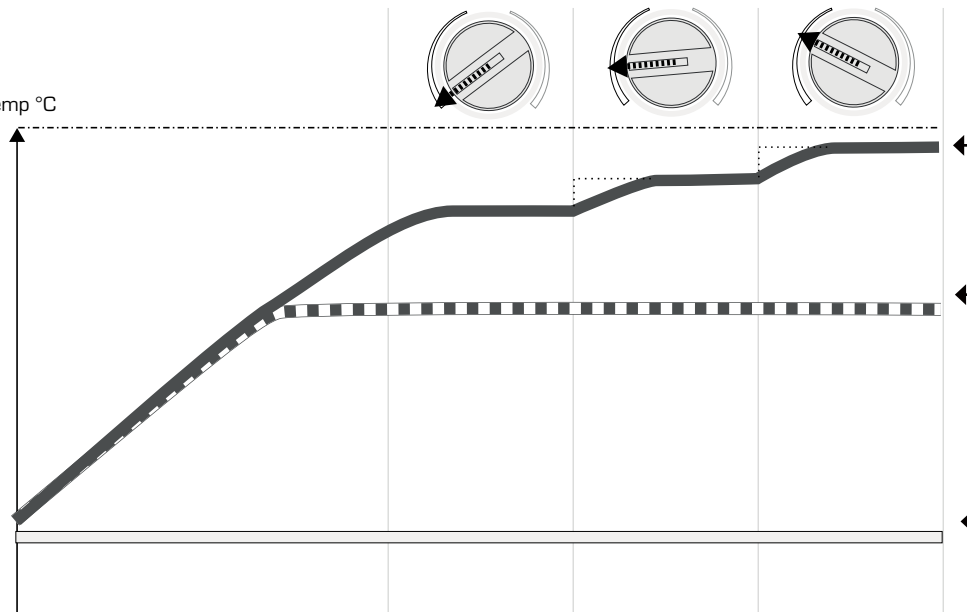
10



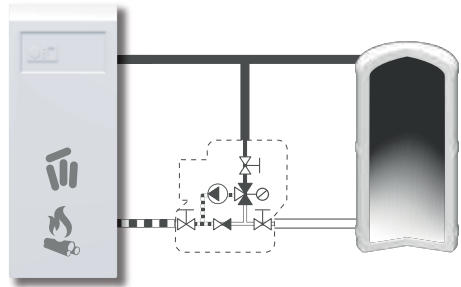
Optimising load temperature



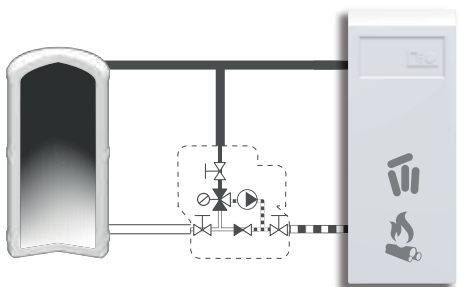
Temp °C



i

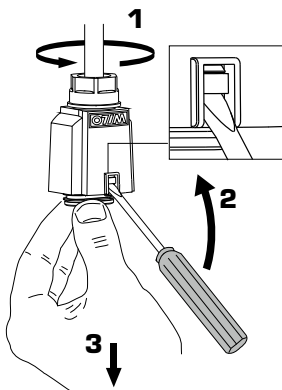


i



Piping Schematics are General Representations

i



i



www.esbe.eu