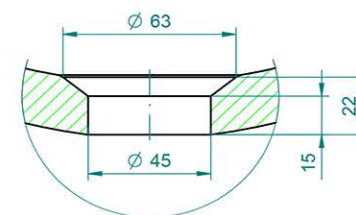
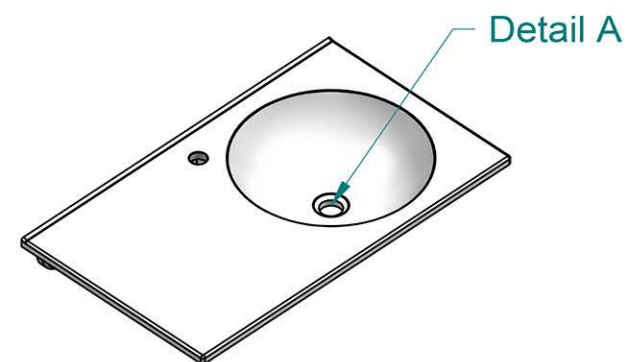
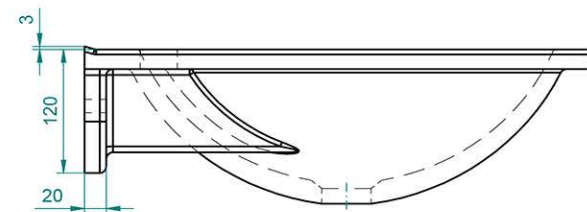
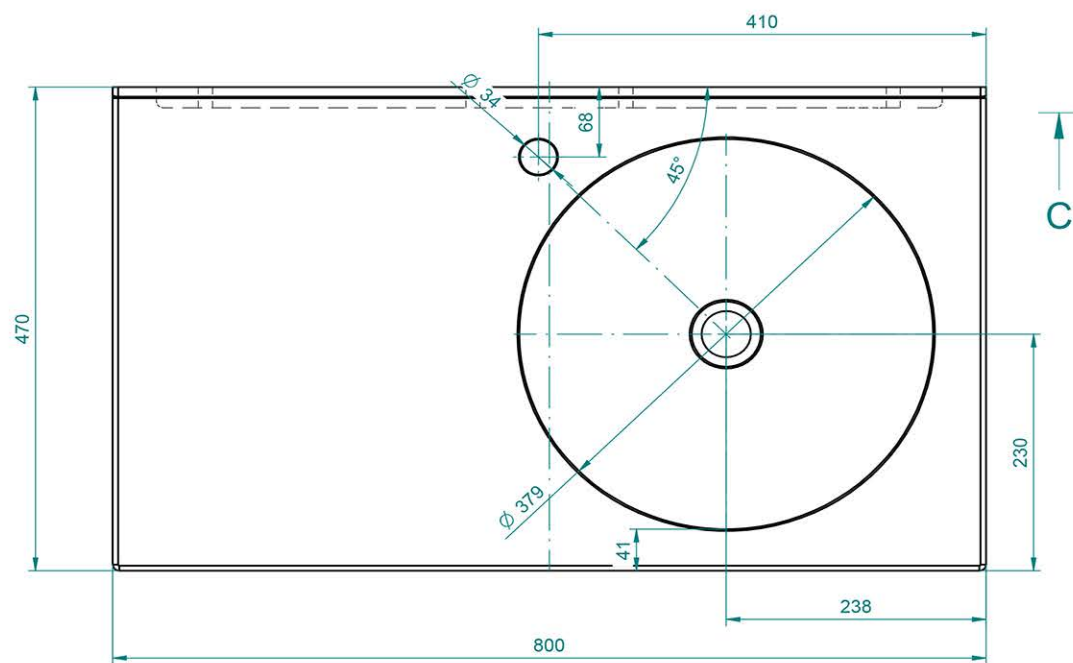


Technical drawing of a U-profile. The top view shows a profile with a total width of 245 mm. The flange width is 45 mm. The distance between the first and second internal ribs is 140 mm. The distance between the second and third internal ribs is 252 mm. The distance from the third internal rib to the right edge is 72 mm. The profile has a height of 55 mm. The bottom flange has a radius of R 50. The bottom view shows a profile with a total width of 19 mm. The bottom flange has a radius of R 50. The bottom view also shows a cross-section of the profile, indicating a thickness of 1.5 mm.



JU081