



One fitting, multiple
tubes. **Fast.**

>B< Push product range

Straight Coupler



BM8270

From: 15mm
To: 28mm

Reduced Coupler



BM8240

From: 16 x 15mm
To: 28 x 22mm

Straight Female Connector



BM8270G

From: 15 x 1/2"
To: 28 x 1"

Straight Male Connector



BM8270G

From: 15 x 1/2"
To: 28 x 1"

Elbow



BM8090

From: 15mm
To: 28mm

Female Elbow



BM8090G

From: 15 x 1/2"
To: 22 x 3/4"

Male Elbow



BM8092G

From: 15 x 1/2"
To: 22 x 3/4"

Wallplate Elbow



BM8472G

From: 15 x 1/2"
To: 22 x 3/4"

Equal Tee



BM8130

From: 15mm
To: 28mm

Tee Reduced End



BM8130RE

From: 20 x 16 x 20mm
To: 28 x 22 x 28mm

Tee Reduced Branch



BM8130RB

From: 20 x 20 x 16mm
To: 28 x 28 x 22mm

Female Branch Tee



BM8130G

From: 15 x 15 x 1/2"
To: 28 x 28 x 1"

Tap Connector



BM8240G

From: 15 x 1/2"
To: 22 x 3/4"

Tank Connector



BM8350

From: 15 x 1/2"
To: 28 x 1"

Bent Tap Connector



BM8002G

From: 15 x 1/2"
To: 22 x 3/4"

Fitting Reducer



BM8243

From: 18 x 15mm
To: 22 x 18mm

Stop End



BM8301

From: 15mm
To: 28mm

Internal Liners



Internal Liners

From: 15mm
To: 28mm

Release Tools



BM850

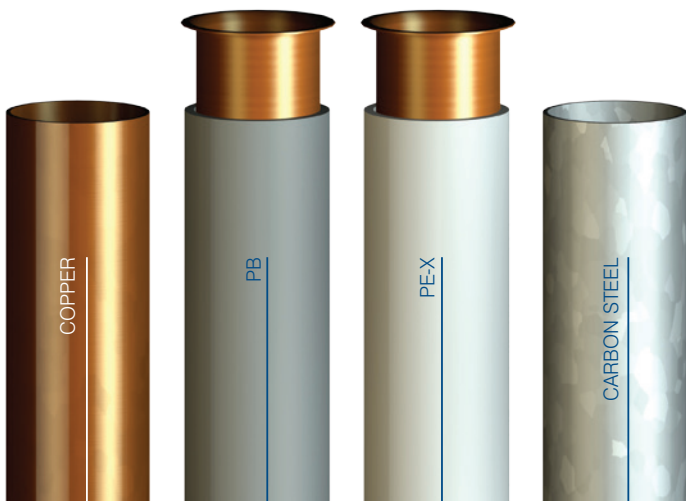
From: 15mm
To: 28mm

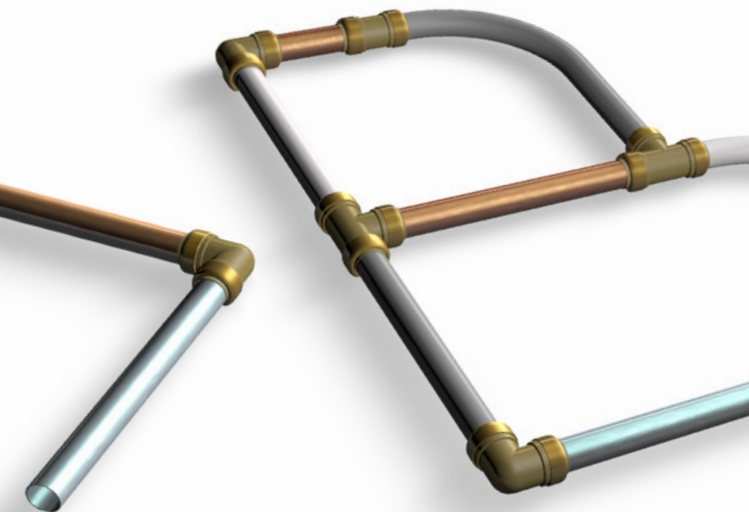
Unique technology

This unique >B< Push technology makes installation easy. No need for flux or flame, avoiding health and safety issues. Simply push and connect to have the perfect joint in a matter of seconds.

Whether you are fitting for large scale commercial projects or attending to domestic maintenance work, labour costs and time will be cut significantly.

>B< Push is a universal fitting suitable for use with multiple tube types and on a wide range of applications.





Tube compatibility

One fitting fits all

>B< Push is a universal fitting that can be used with many different tube types, therefore reducing the inventory costs of professional plumbers. It is ideal for use in retrofit plumbing situations where space is confined, or when flame based applications must be avoided.

Copper

>B< Push fittings will join size-compatible copper tubes that are manufactured in accordance with EN 1057.

R220 (annealed) temper tube must be re-calibrated in accordance with EN 1057 tolerances.

PE-X

>B< Push fittings will join size-compatible PE-X tubes that are manufactured in accordance with BS 7291-3 or EN 15875 (except class A-6.3).

PB

>B< Push fittings will join size-compatible PB tubes that are manufactured in accordance with BS 7291-2 or EN 15876.

Carbon steel

>B< Push fittings will join size-compatible carbon steel tubes that are manufactured in accordance with EN 10305.



Key benefits

One fitting, many tubes

>B< Push is a professional, universal cold jointing solution for a wide selection of tubes including copper, PB, PE-X and carbon steel. Instead of carrying a variety of fittings for a range of applications, using >B< Push means a more diverse fitting which can reduce inventory costs.

Fast and convenient to install

>B< Push is fast and convenient to install as it takes just seconds to create a secure joint. Once connected, >B< Push remains firm but not fixed, so it can be easily turned to align gauges and valves.

Slimline shape, heavyweight performance

Patented for its unique features, >B< Push's slimline design makes it ideal for tight corners, and with its aesthetically pleasing looks, is ideal for exposed pipework.

Simple and reusable

>B< Push is designed with a high quality O-ring (EPDM), a stainless steel grab ring and a plastic sleeve to ensure that the tube is guided correctly into the fitting body.

>B< Push offers tremendous strength and durability. It is simple to install and has a professional demounting tool allowing the fitting to be reused if required. >B< Push fittings can also be recycled at the end of life.

Electrical continuity

The >B< Push design ensures that electrical continuity is maintained throughout metallic tube joints, so earth bonding is not required. Not applicable when used with plastic pipe.



Low lead content

>B< Push is manufactured from precision machined low lead brass with a high resistance to dezincification (DZR) corrosion.

Applications

>B< Push fittings can be used for a wide range of commercial and domestic applications such as drinking water; hot and cold water systems, sanitary, heating and cooling systems.

Size availability

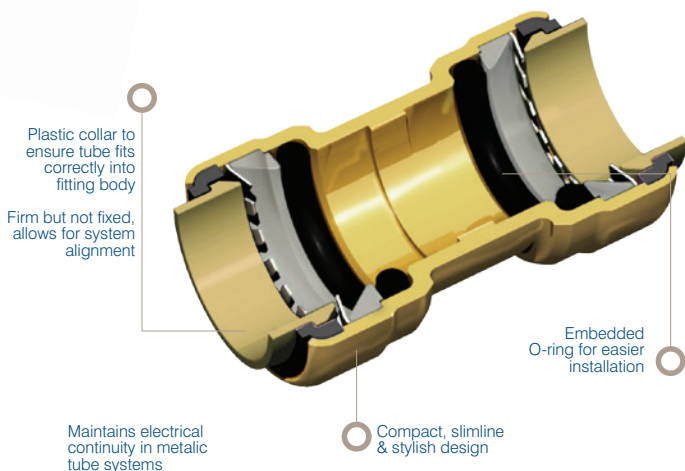
>B< Push fittings are available in sizes, 12, 15, 16, 18, 20, 22, 25 and 28mm.

Temperature range

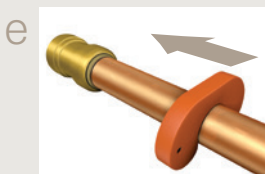
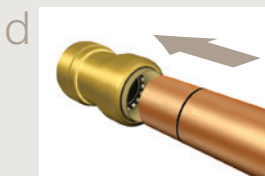
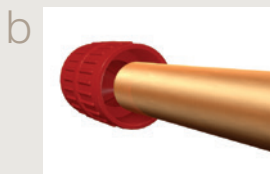
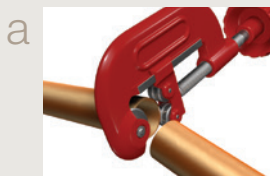
>B< Push fittings conforms to normal operating parameters for metallic tubes: Working temperatures between ambient - 95°C in low temperature conditions measures should be taken to avoid freezing such as insulation or additive in cooling systems.

Maximum pressure range

16 bar at 30°C and 6 bar at 95°C.

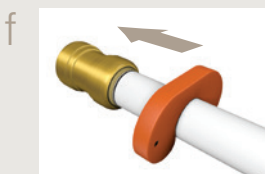
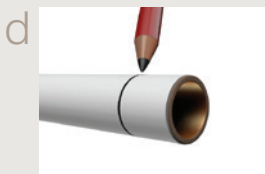
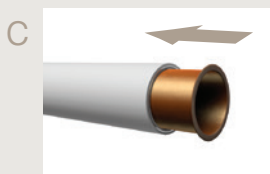


Copper installation



Installation demonstrations
videos are also available on
our youtube channel

PE-X and PB installation



A history of innovation

From humble beginnings as a German metal foundry in 1909, Conex Bänninger has steadily grown through innovation to become an industry leader.

A fitting reputation for quality and innovation

For over a century, Conex Bänninger has been renowned for providing leading fittings, valves and accessories across diverse international markets. We specialise in developing innovative and versatile solutions that deliver results for the most complex of applications.

Our reputation for high quality manufacturing in the UK has been supported by our commitment to first class customer service. In addition, as part of the IBP Group, we can also access extensive research and development, world class manufacturing facilities and international expertise.

A commitment to quality

All Conex Bänninger products are designed, built and rigorously tested to ensure they meet the highest standards of safety and durability. Our products are fully compliant with the relevant international standards including BSI, WRAS, DVGW, CSTV, KIWA and SWEDCERT.

As a company, we take a responsible and proactive approach to all our processes through sourcing, manufacture, distribution and management systems. This has resulted in ISO 9001 and ISO 14001 accreditation for sustainable management.

Leading products and solutions

Conex Bänninger has a long history of innovating new products and we offer a complete range of fittings and valves for use with copper, brass, bronze, carbon steel, plastics, MLP and stainless steel tubes.

Our international brands are used throughout the world in domestic, commercial and industrial applications. We work with customers to develop tailored solutions encompassing customised packaging, logistics, approvals and flexible manufacturing.

Global impact

Embracing changing times, across global markets, Conex Bänninger has continued to invest in people, skills, infrastructure and production. We can bring over a century of expertise to developing new products, servicing customers and transferring our skills across markets and continents.

Conex Universal Limited: Global House, 95 Vantage Point, The Pensnett Estate, Kingswinford, West Midlands DY6 7FT, UNITED KINGDOM.

Tel: +44 (0)121 557 2831, Fax: +44 (0)121 557 0185

Email: salesuk@ibpgroup.com, Website: www.conexbanninger.com

Conex Bänninger products are approved by numerous Standards Authorities and Certification Bodies. This is a representation of the full range from Conex Universal Ltd. IBP trademarks are registered in numerous countries. More information online at: www.conexbanninger.com