

# EASY LINE

## EL1615, EL1715

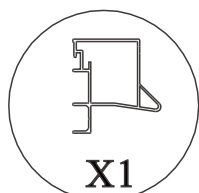
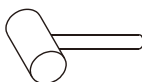
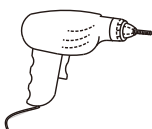
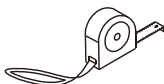
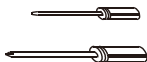


**polysan** 

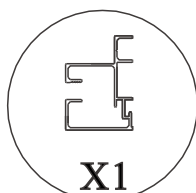
Polysan s.r.o.  
Nesměřice 52  
285 22 Zruč nad Sázavou  
[www.polysan.net](http://www.polysan.net)



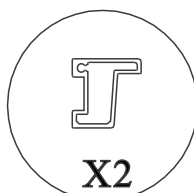
silicone



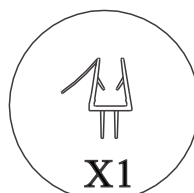
A



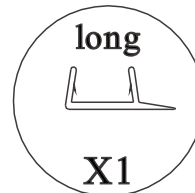
B



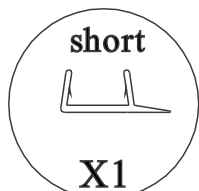
C



D



E



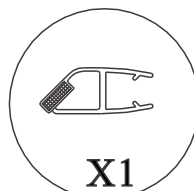
F



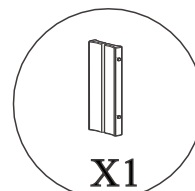
T



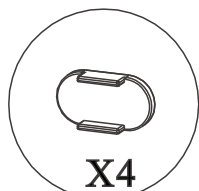
H



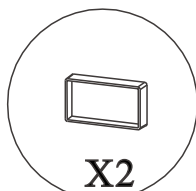
I



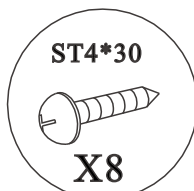
J



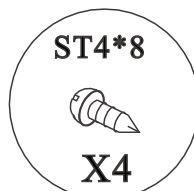
K



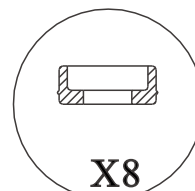
L



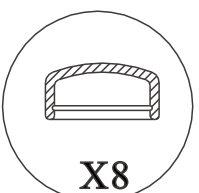
M



N



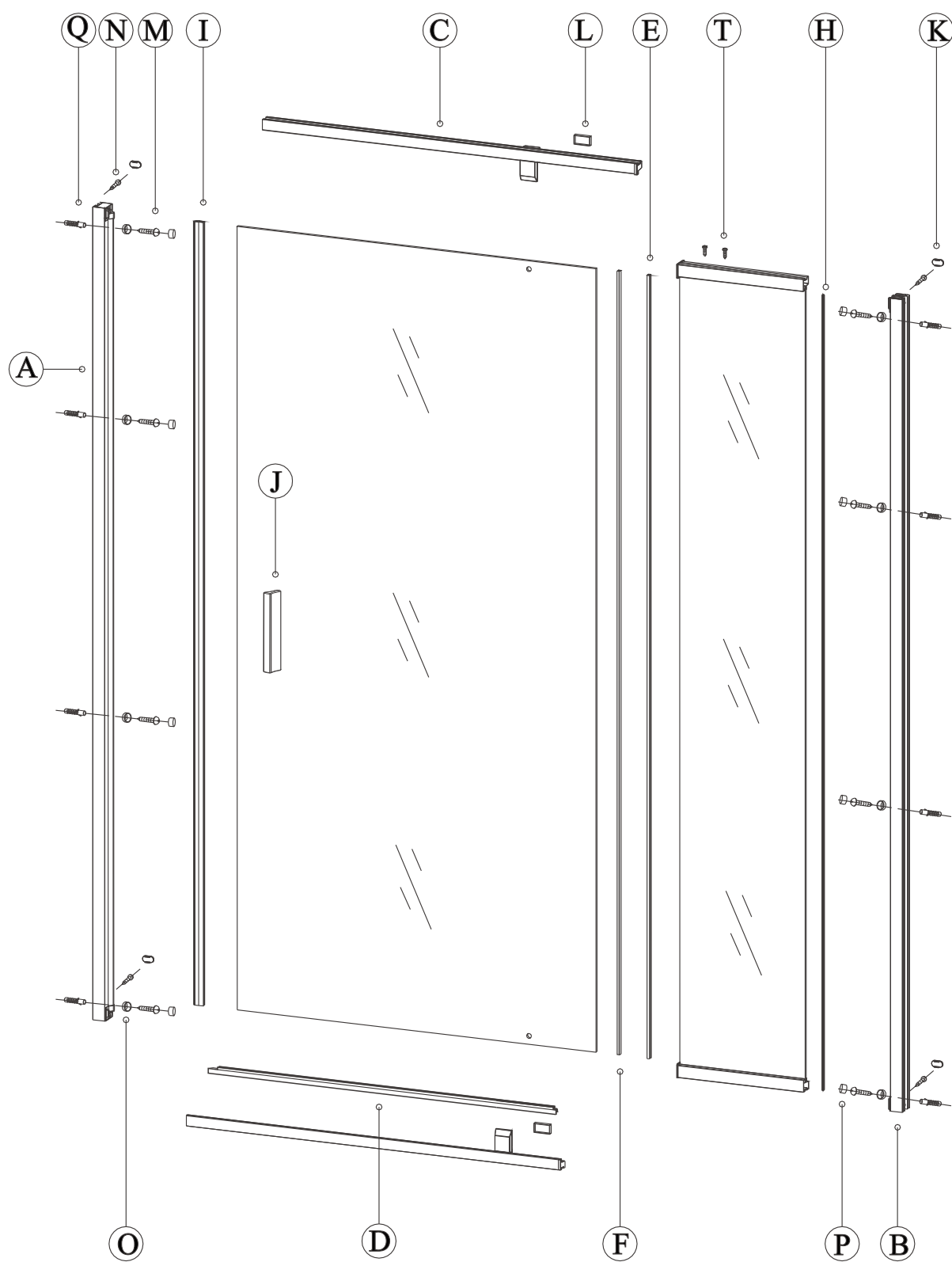
O



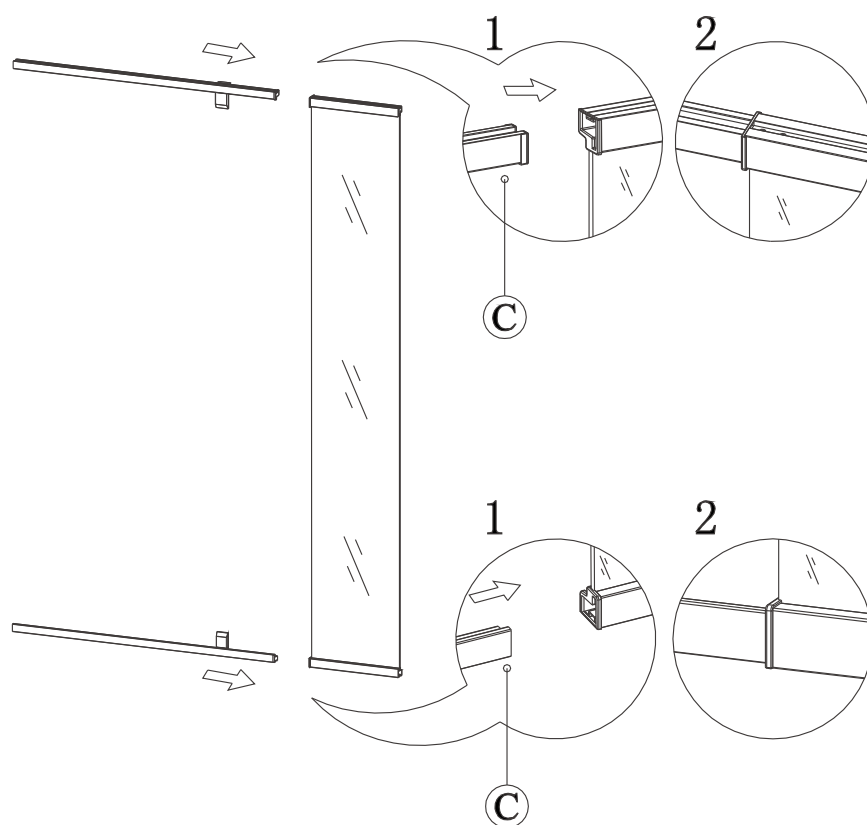
P



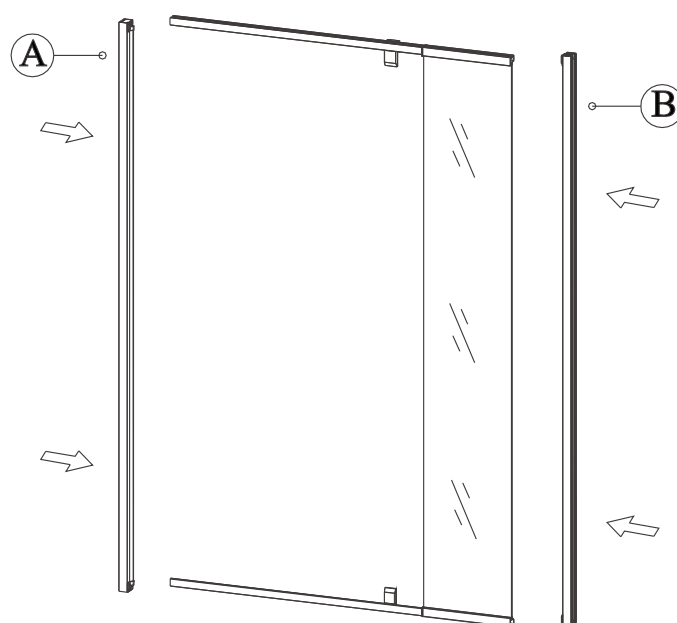
Q



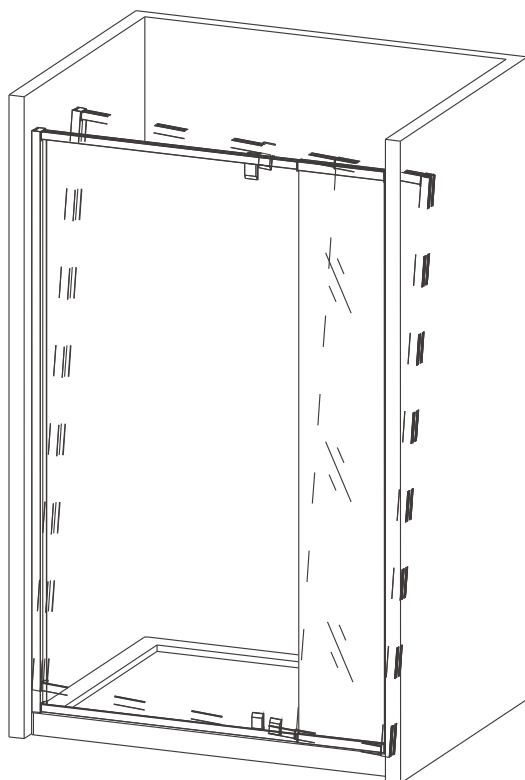
1



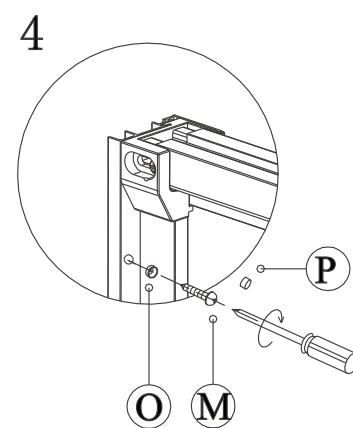
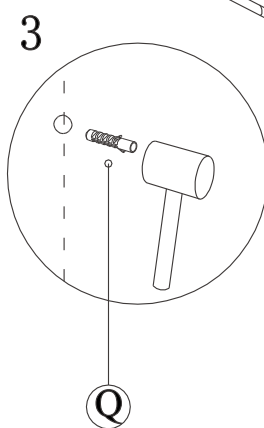
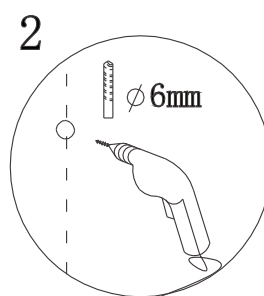
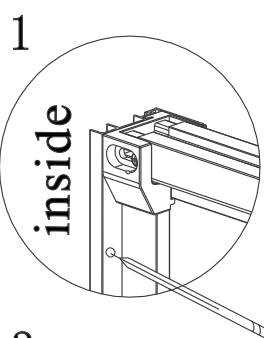
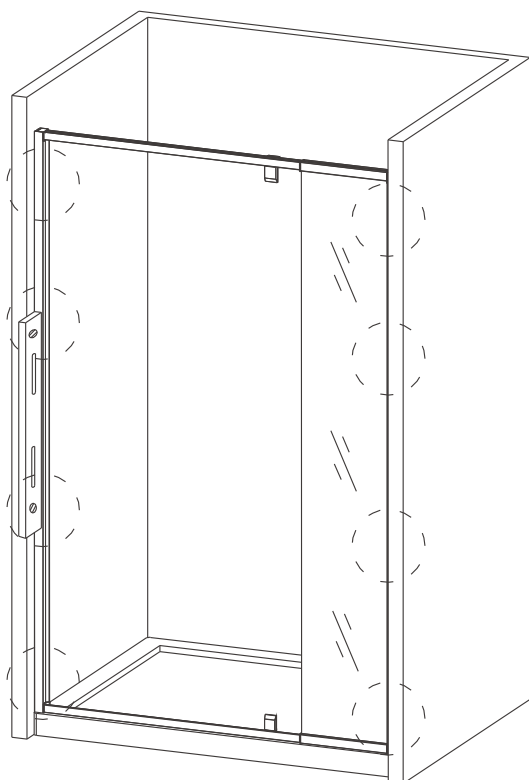
2



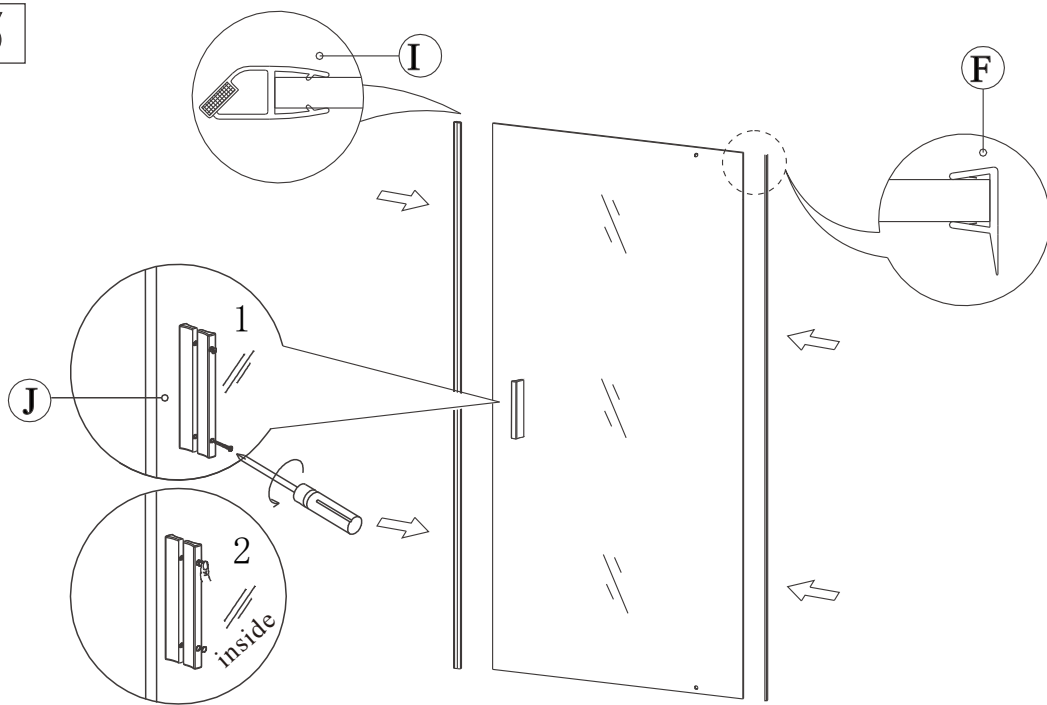
3



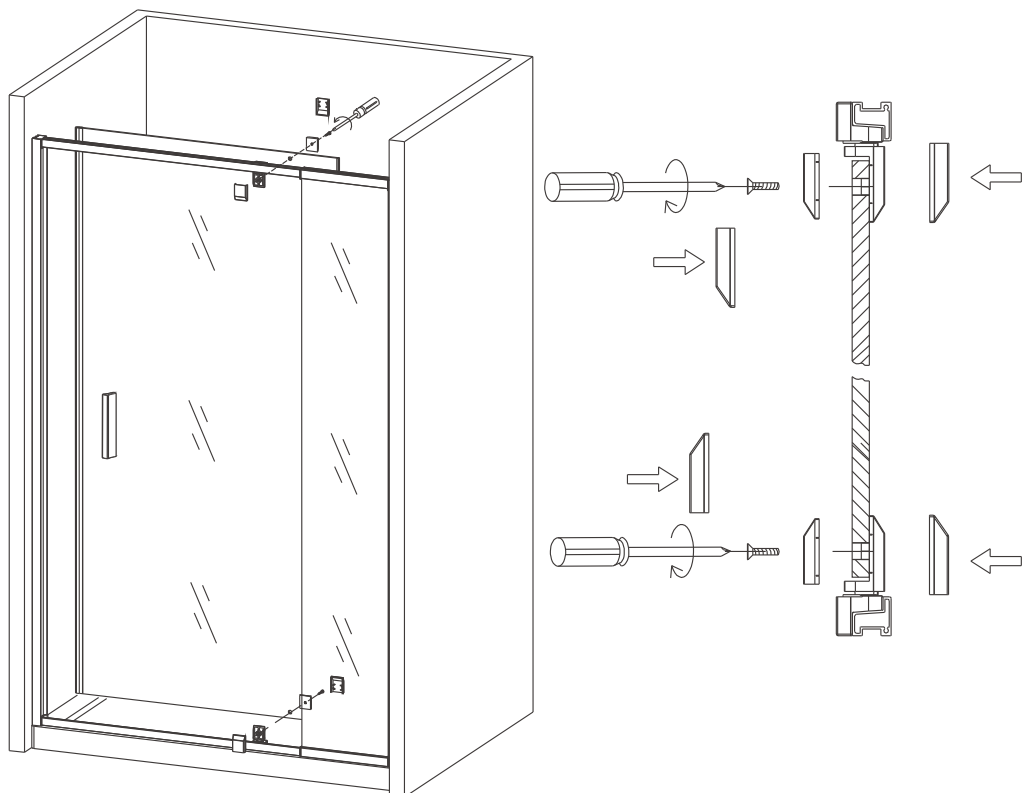
4



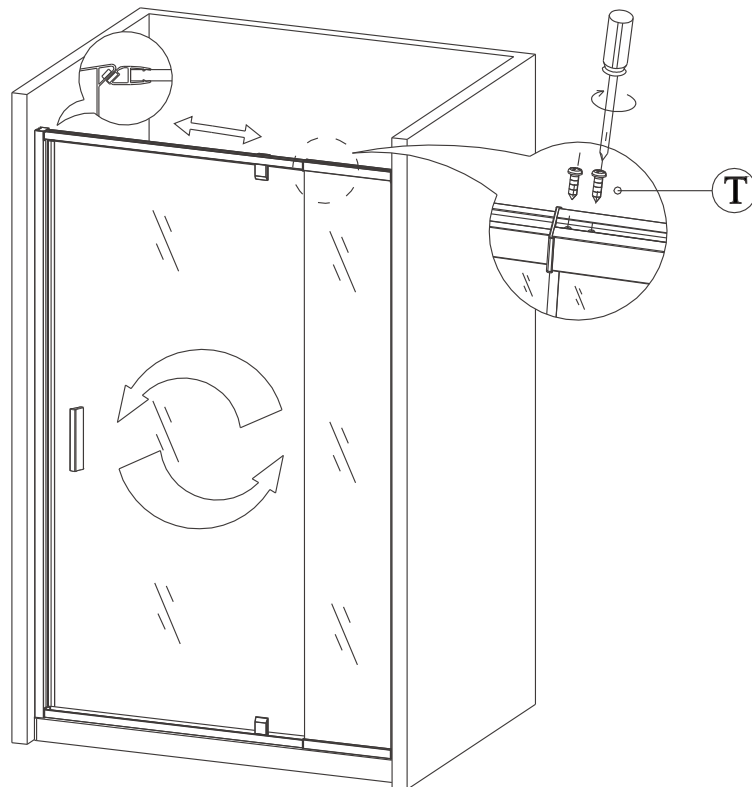
5



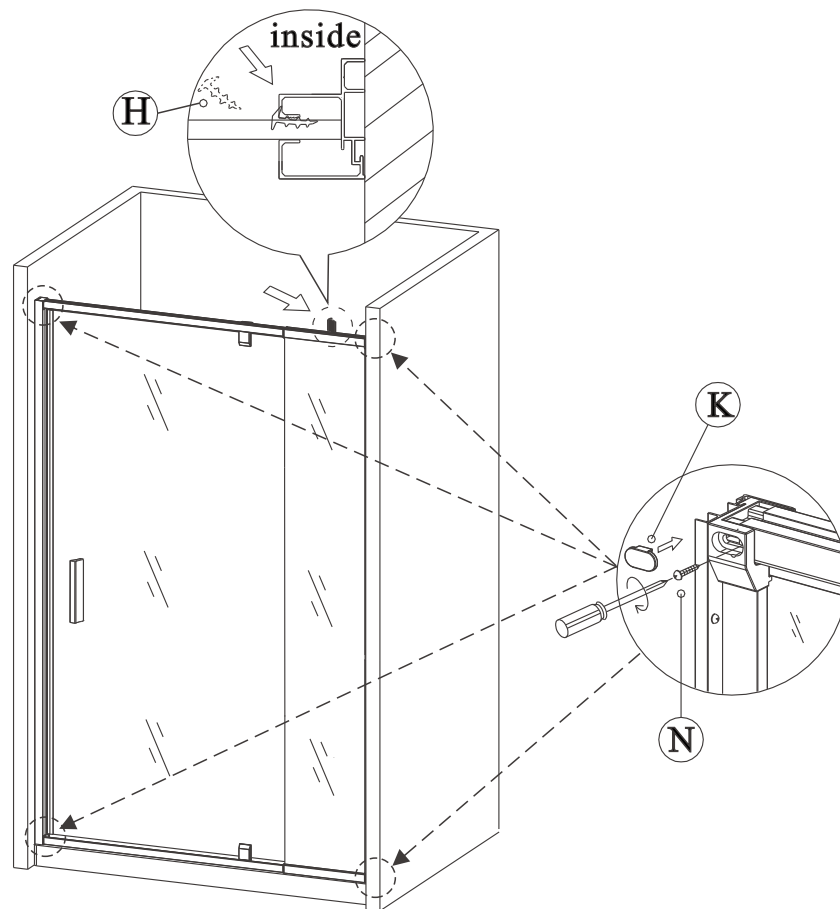
6



7



8





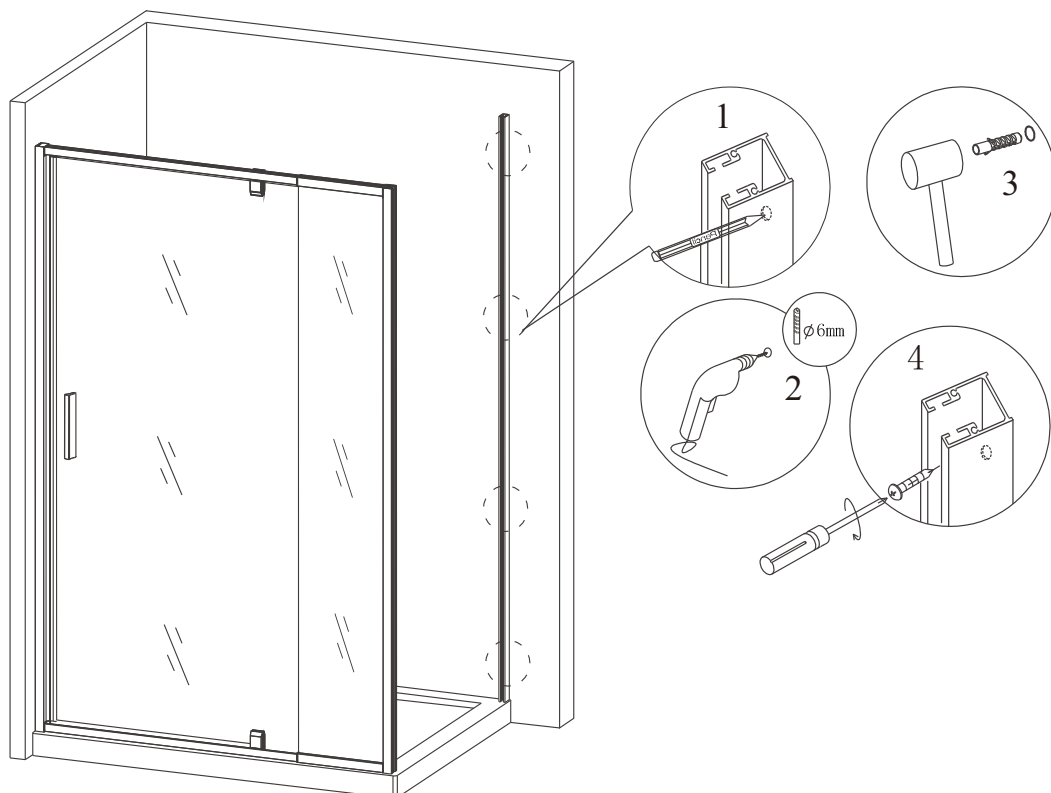


11

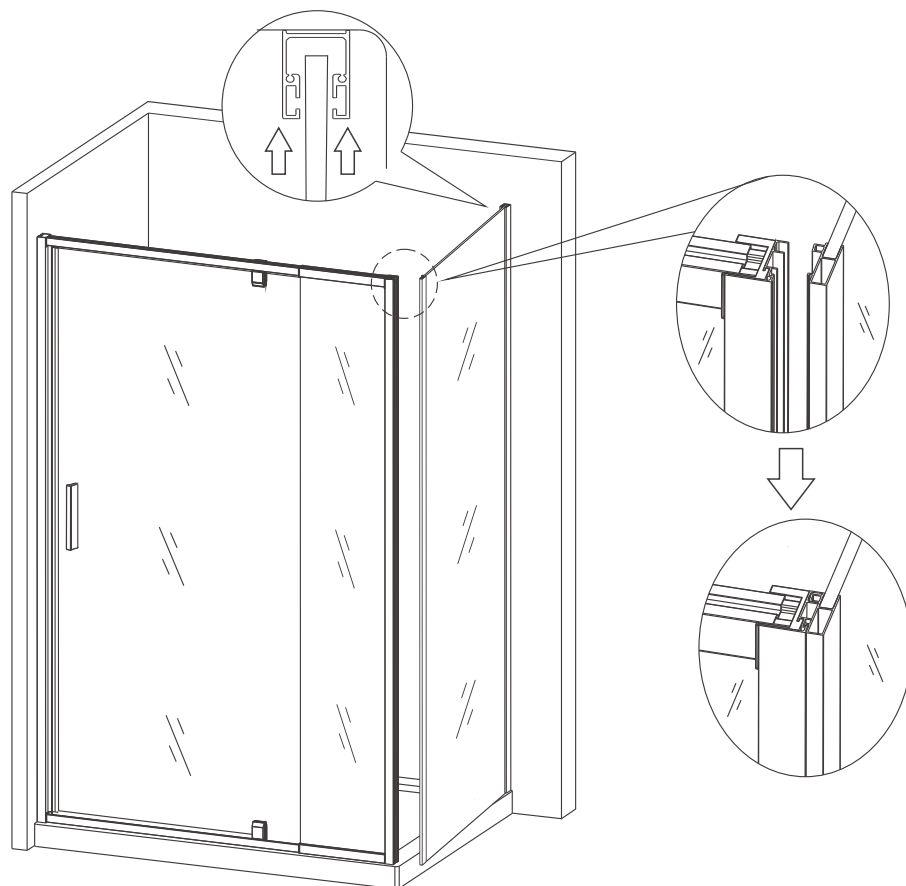


MATCH WITH SIDE PANEL

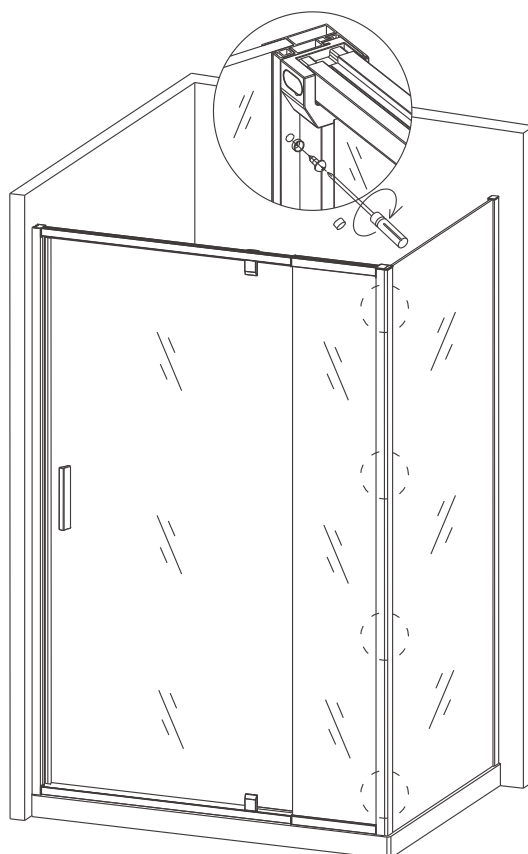
12



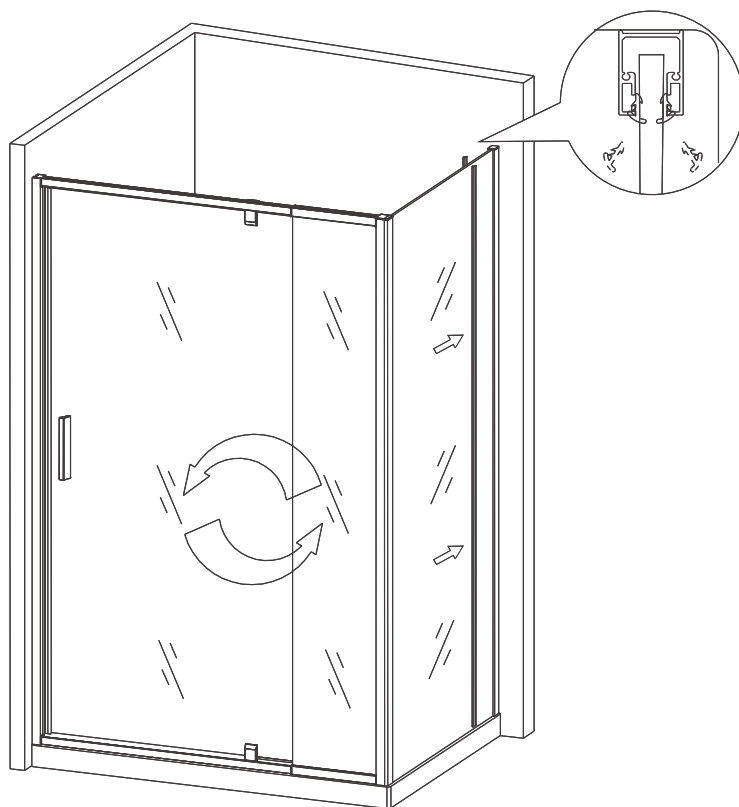
13



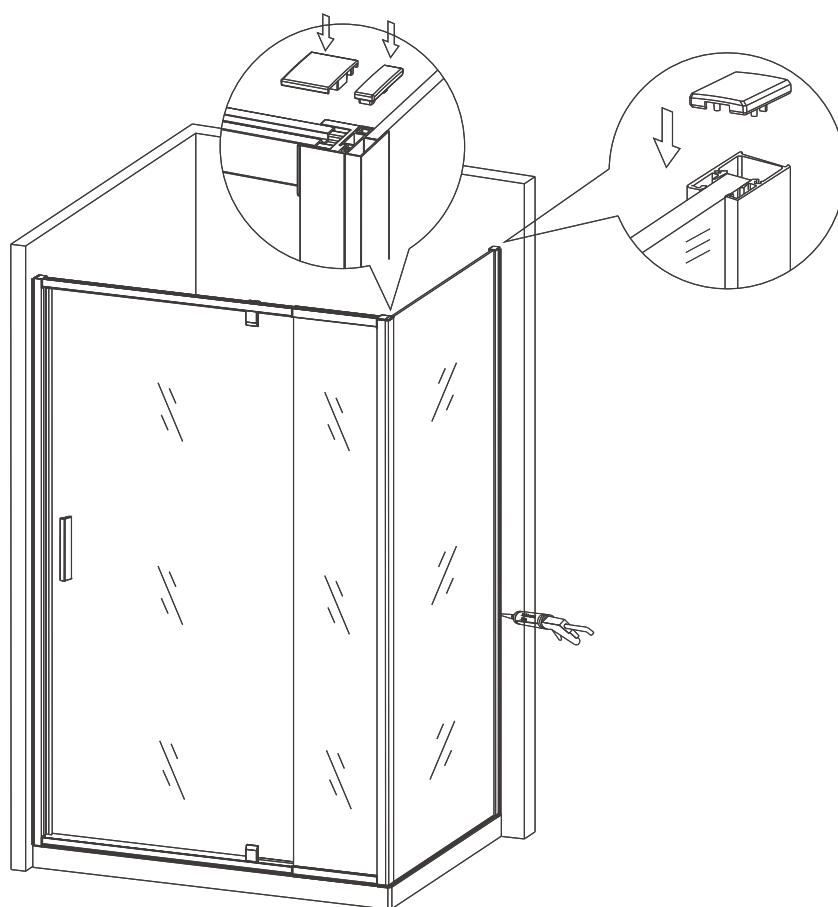
14



15



16





Polysan s.r.o.  
Nesměřice 52  
285 22 Zruč nad Sázavou  
Czech Republic  
[www.polysan.net](http://www.polysan.net)

EN 14428

Glass shower enclosure  
cleaning efficiency: conforming  
impact resistance: conforming  
operating life: conforming

Skleněné sprchové zástěny  
schopnost čištění: vyhovuje  
odolnost proti nárazu: vyhovuje  
životnost: vyhovuje